

**RESOLUTION NO. 2017- 10**

**A RESOLUTION OF THE BOARD OF COUNTY COMMISSIONERS OF NASSAU COUNTY, FLORIDA, VACATING, ABANDONING AND DISCONTINUING OF ANY RIGHT OR INTEREST OF SAID NASSAU COUNTY, FLORIDA, AND THE PUBLIC IN THE PLAT KNOWN AS VILLAGE OF CRANDALL, RECORDED IN PLAT BOOK 39, PAGE 364, OF THE PUBLIC RECORDS OF NASSAU COUNTY, FLORIDA.**

**WHEREAS**, Section 177.101, Florida Statutes, authorizes and empowers the Board of County Commissioners (the "Board"), upon the petition of any person, to vacate plats in whole or in part, and return the property covered by such plats either in whole or in part into acreage; and

**WHEREAS**, the Petitioners, TerraPointe LLC and Rayonier Atlantic Timber Company f/k/a Timberlands Holding Company Atlantic, Inc., petitioned the Board to vacate and abandon the plat attached as Exhibit "A", which is incorporated herein; and

**WHEREAS**, the Petitioners are the fee simple owners of record of the plat requested to be vacated, and the vacation of such plat will not affect the ownership or right of convenient access of persons owning other parts of the subdivision, or adjacent properties; and

**WHEREAS**, notice was published in accordance with the requirements of section 177.101(4), Florida Statutes, and all state and county taxes assessed against the Petitioners on the lands to be vacated that are due and payable have been paid in full; and

**WHEREAS**, a notice of intention to apply to the Board of County Commissioners to vacate the plat was duly published in the Fernandina Beach News Leader, a newspaper of general circulation in Nassau County, Florida, on November 23, 2016 and November 30, 2016; and

**WHEREAS**, a hearing was held on January 23, 2017, and after due weight, consideration and determination, it was determined that the statutory requirements have been

complied with and that the vacating of the plat will not adversely affect the ownership or right of convenient access of any person; and

**WHEREAS**, the Board has determined that the vacation of the plat attached as Exhibit "A" is in the best interest of the County and the public.

**NOW, THEREFORE, BE IT RESOLVED** by the Board of County Commissioners of Nassau County, Florida, that:

SECTION 1. Recitals. The above recitals are true and are incorporated as legislative findings.

SECTION 2. Vacation and Abandonment. Upon request of Petitioners, the Board finds that the plat attached hereto as Exhibit "A" is hereby vacated and abandoned and that the property covered by such plat is returned to acreage and that this Resolution shall have the effect of vacating all platted streets and alleys shown on the plat attached hereto as Exhibit "A", none of which have become highways necessary for use by the traveling public.

SECTION 3. This Resolution shall be spread upon the minutes of the Board of County Commissioners of Nassau County, Florida, and said Petitioner shall publish a notice of its adoption one time within thirty (30) days hereafter in a newspaper of general circulation in Nassau County Florida.

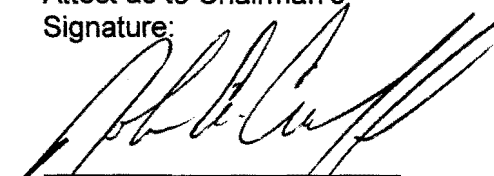
**DULY ADOPTED** this 23rd day of January, 2017.

BOARD OF COUNTY COMMISSIONERS  
NASSAU COUNTY, FLORIDA



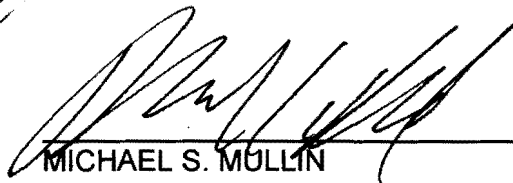
DANIEL B. LEEPER  
Its: Chairman

Attest as to Chairman's  
Signature:



JOHN A. CRAWFORD  
Its: Ex-Officio Clerk

Approved as to form by the Nassau County Attorney:



MICHAEL S. MULLIN

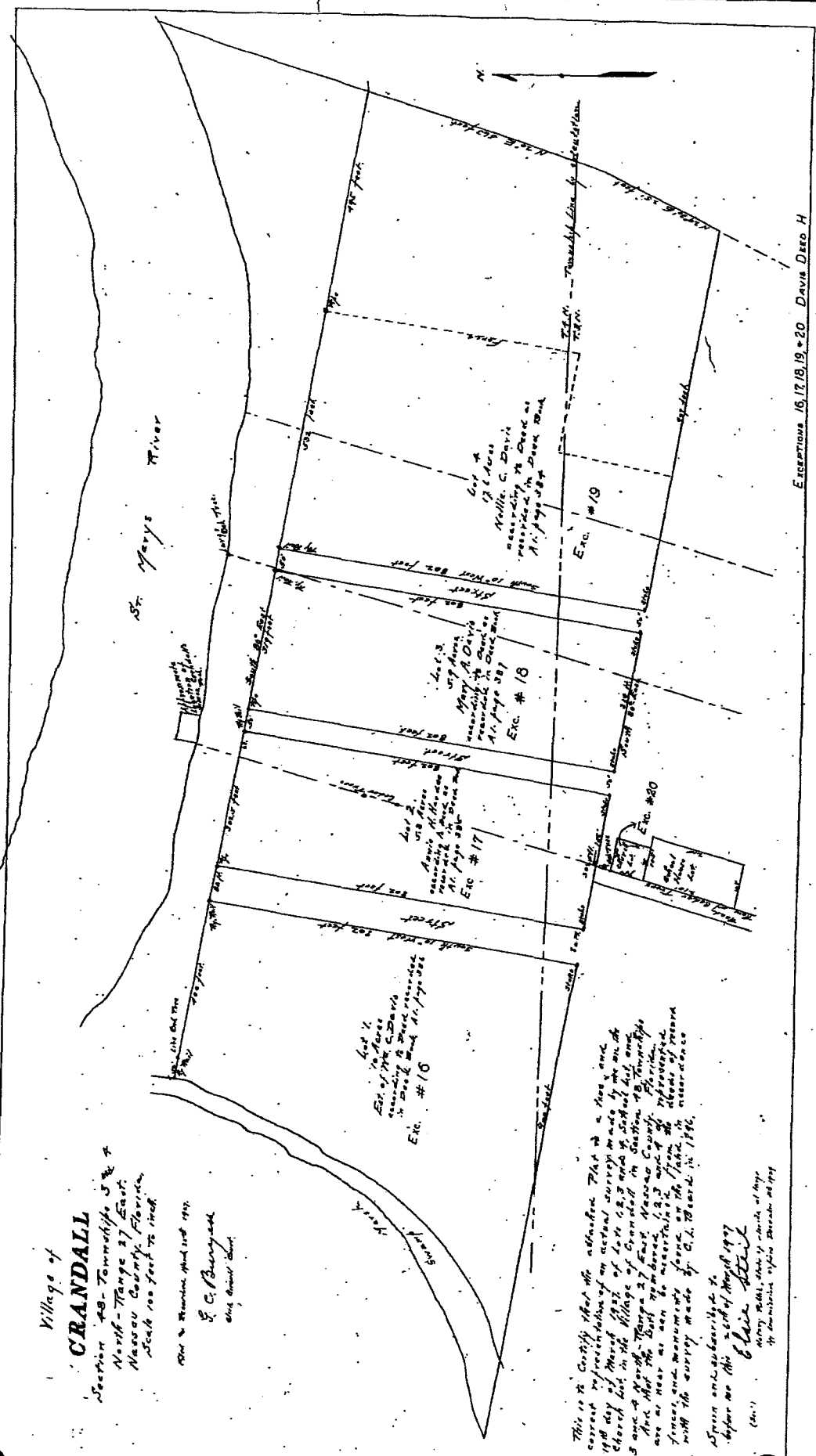
MES  
01.24.17

**EXHIBIT "A"**

**COPY OF VILLAGE OF CRANDALL PLAT**

Village of  
**CRANDALL**  
 Section 29, Township 3 N & E  
 North - Range 27 East,  
 Nassau County, Florida.  
 Scale 100 feet to 1 inch.

SW & SE corners fixed 1912  
 E. C. Berglund  
 and others



EXCEPTIONS 16, 17, 18, 19 & 20 DAVIS DEED H

This is to certify that the attached map is a true and correct representation of an actual survey made by me on the 19th day of March 1922, of Lots 1, 2, 3, 4, 5, 6, 7, 8, 9, 10, 11, 12, 13, 14, 15, 16, 17, 18, 19, and 20, in the Village of Crandall in Nassau County, Florida. I say that the East boundary of Crandall in Nassau County, Florida, is as near as can be ascertained from the approved plans and monuments found on the facts in accordance with the survey made by G. L. Howard in 1886.

Given and subscribed to  
 before me this 20th of March 1922  
 E. C. Berglund  
 My Commission expires December 31, 1921